



C.le di Vallecupa

F.te del Peschio

Castello

Casaline

S. Maria

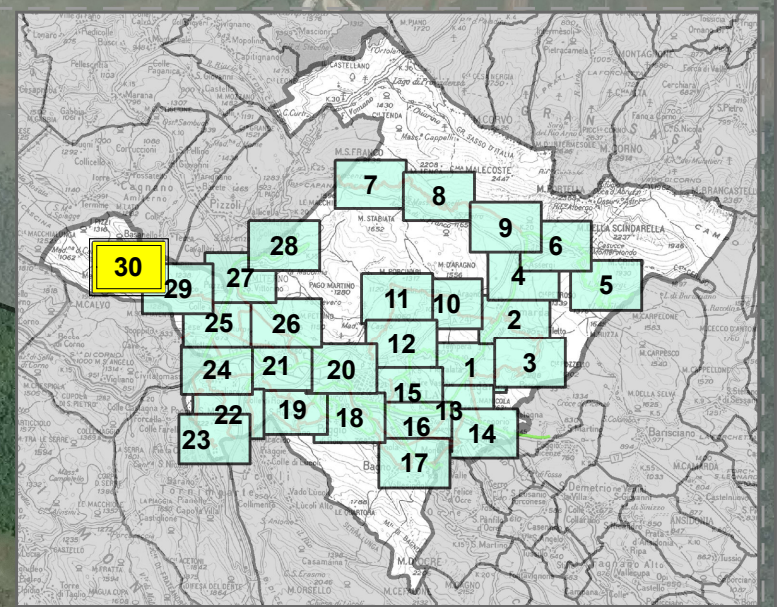
Menzano

Santi

S. Rocco

Km 6+100





Km 5+880



ALLEGATO ALLA DELIBERA
di Giunta n. ____ del ____

Il Dirigente Ing. Giuseppe Belligno

L'Assessore Francesco De Santis

-  strade provinciali
-  strade statali
-  chilometriche
-  centri abitati

TAV 3.30_Santi - Menzano - Casaline

