


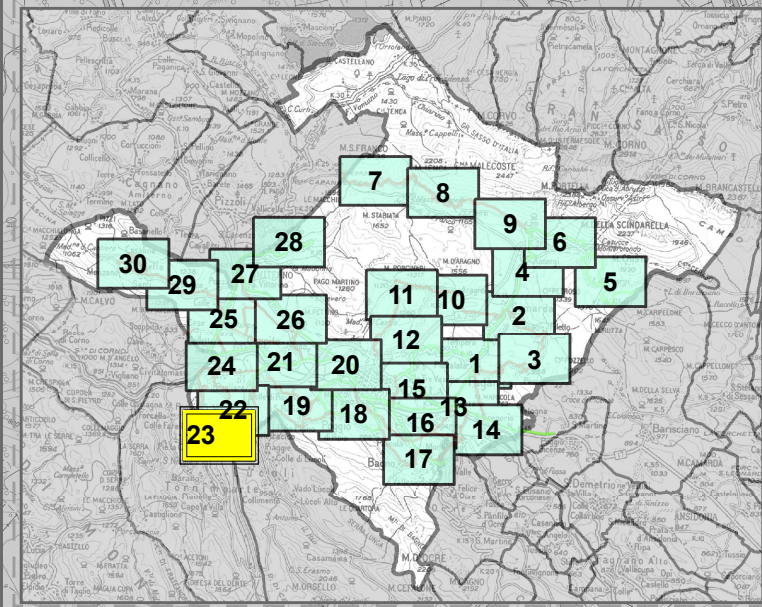
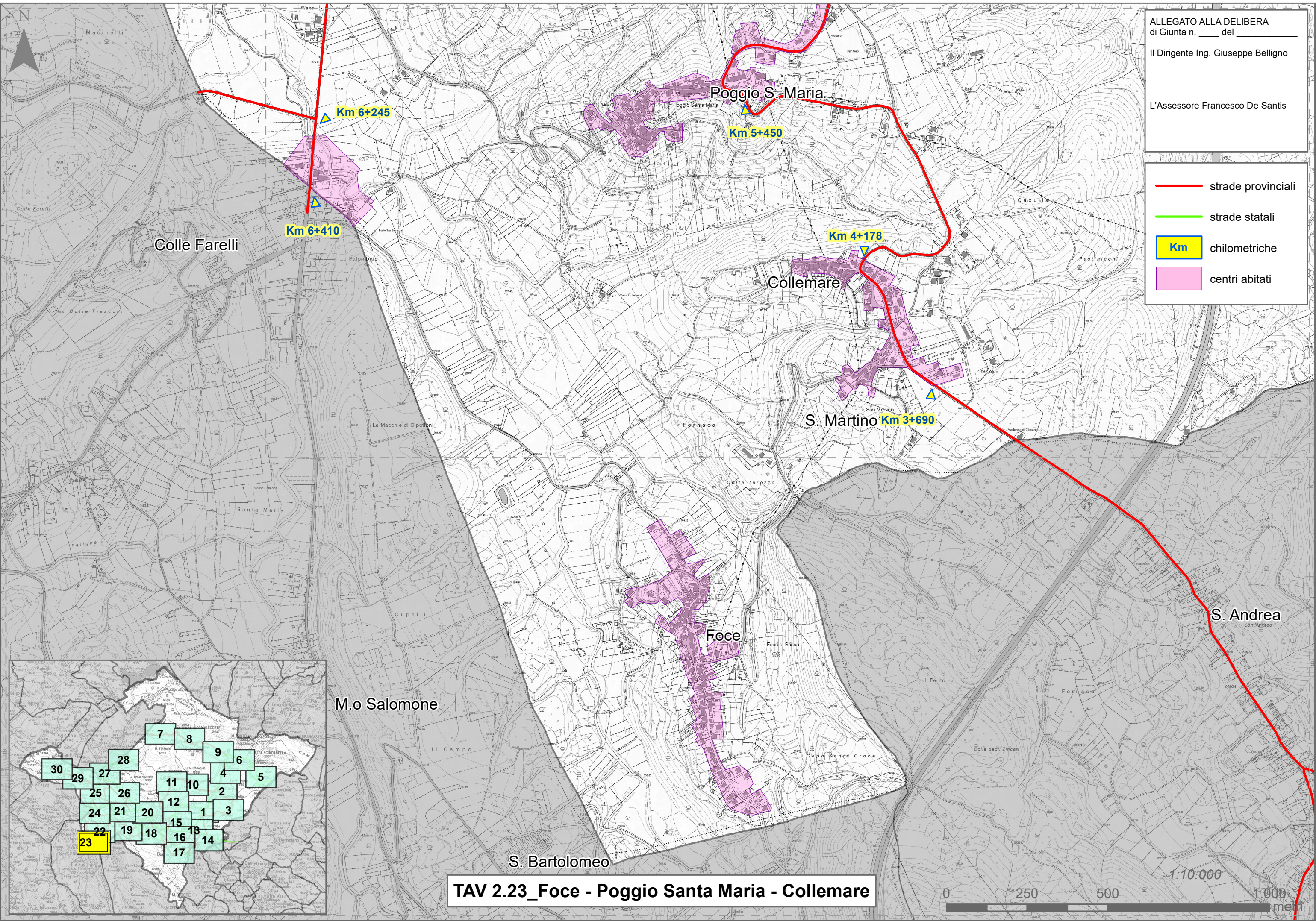


ALLEGATO ALLA DELIBERA
di Giunta n. ____ del ____

Il Dirigente Ing. Giuseppe Belligno

L'Assessore Francesco De Santis

-  strade provinciali
-  strade statali
-  chilometriche
-  centri abitati



TAV 2.23_Foce - Poggio Santa Maria - Collemare

1:10.000

