



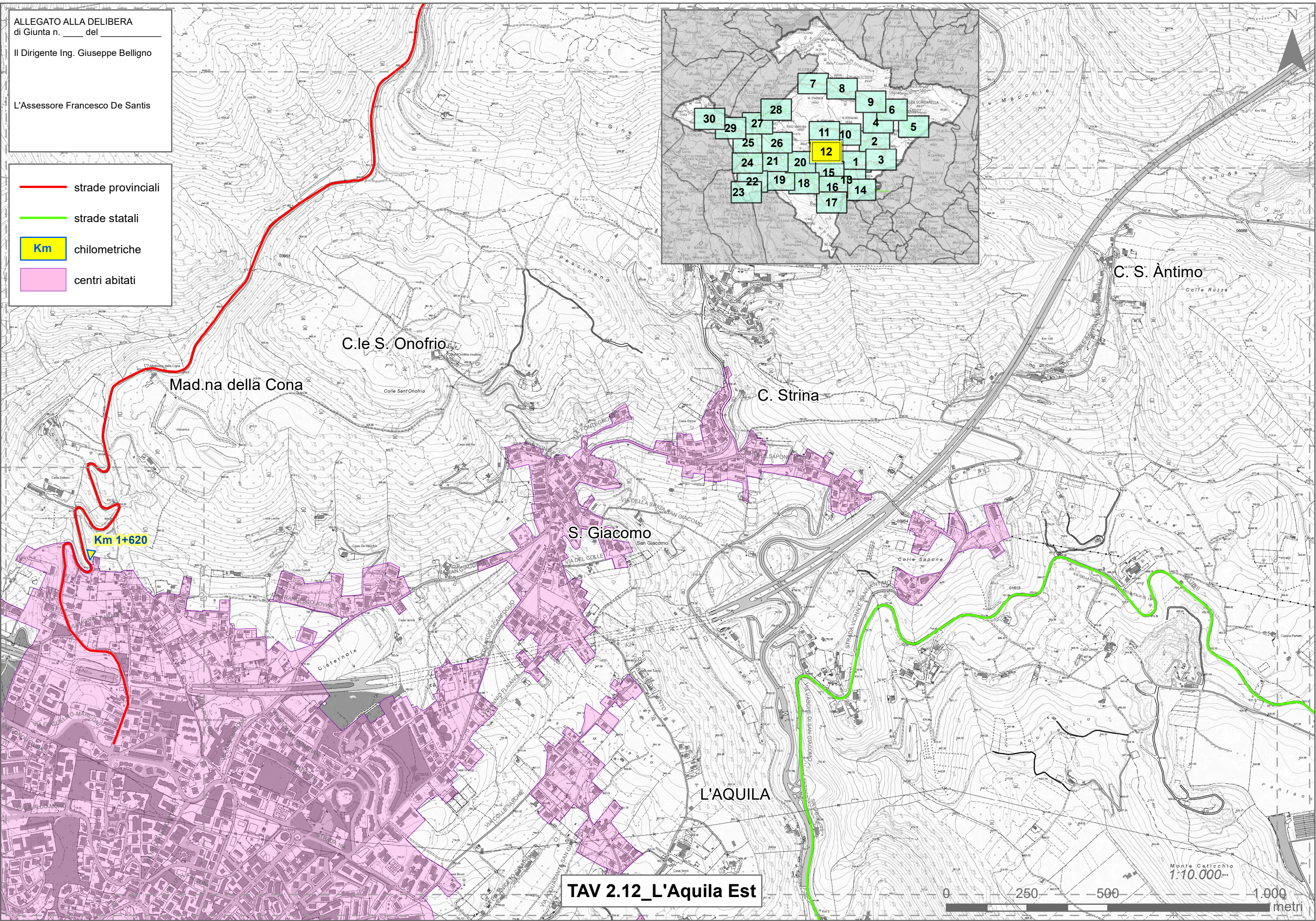
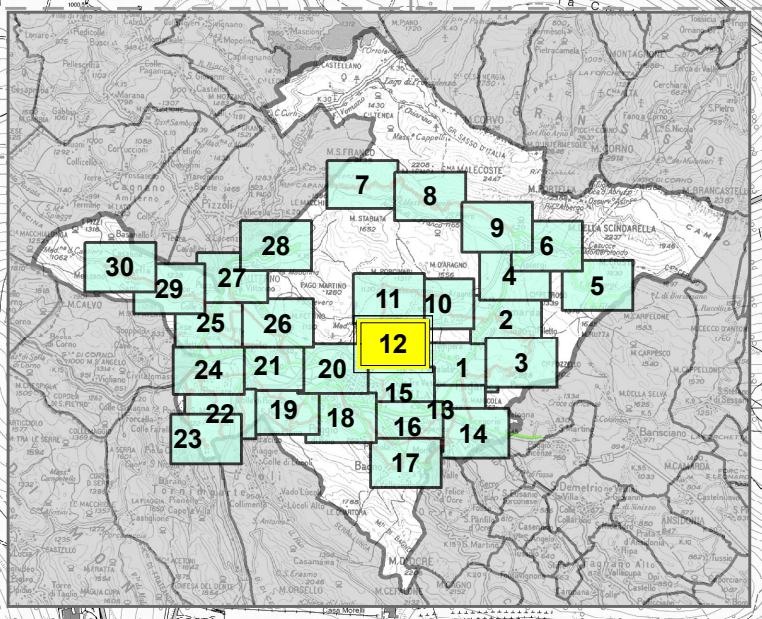


ALLEGATO ALLA DELIBERA  
di Giunta n. \_\_\_\_ del \_\_\_\_

Il Dirigente Ing. Giuseppe Belligno

L'Assessore Francesco De Santis

-  strade provinciali
-  strade statali
-  chilometriche
-  centri abitati



TAV 2.12\_L'Aquila Est